

K860

KNUCKLEBOOM LOADER



PERFORMANCE BENCHMARK.

The hydraulic system is the industry benchmark, featuring multi-functioning capabilities enabling operators to lift, swing, and rotate grapple simultaneously without impairing performance. The system also now has improved cold oil bypass and hose routing increasing reliability.



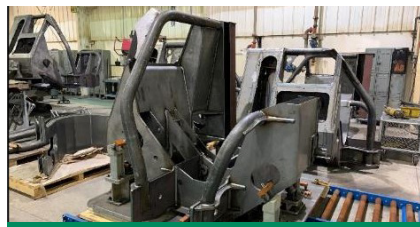
EASE OF OPERATION.

The new steel console provides increased work zone visibility, an easy to clean surface and phone charging capabilities. Weiler electronics and control systems provide a user friendly interface and deliver new ease of use features including push to start.



PRODUCT DIFFERENTIATION.

The K860 features many larger components including boom and stick cylinders, swing motor, and implement pump. Combined with strengthened structures and a standard counterweight, the K860 delivers the performance needed for high production jobs and large timber.



IN-HOUSE MANUFACTURING.

95%+ of all fabrications for the loader, delimeter and grapple are made in Weiler's LaGrange, GA facility. This combined with a locally sourced trailer, U.S. manufactured cylinders, and a local parts warehouse enables quick reaction to customer needs.



ENGINE SIMPLIFICATION.

The K860 packs a punch with the 202 HP C7.1 Stage 5 Cat® engine and provides a simplified engine arrangement by reducing engine Electronic Control Modules (ECMs) from 3 to 1, using a direct drive fan and increased horsepower for peak performance and multi-functioning.



UNMATCHED SUPPORT.

The industry's only loader and work tool package. The Weiler 426 delimeter and 4548 or 5055 grapples ensure one point of contact for warranty and service to keep your operation up and running. Both grapple models can also be matched with a grapple saw direct from the factory.

K860 SPECIFICATIONS

Engine Model	Cat® C7.1 Stage 5	Fuel Capacity	100 gal 379 L	Maximum Reach	32' 6" 9.90 m
Gross power	202 hp 151 kW	DEF Capacity	4.2 gal 16 L	Transport Width	8' 6" 2.57 m
Engine Speed	1800 rpm	Swing Torque	73,800 lbf-ft 100 kN-m	Transport Height	13' 3" 4.04 m
Weight	36,500 lb 16 556 kg	Swing Speed	9.5 rpm	Transport Length	52' 1" 15.88 m

Base configuration includes standard loader hydraulics and standard boom and stick. All transportation dimensions are of a trailer mounted loader.

POWERTRAIN

- Cat® C7.1 engine certified to EPA Stage 5
- Primary and secondary fuel filters, including water separator
- Electric fuel priming and transfer pump
- 2-Stage engine air cleaner
- Oversized cooling system
- Engine auto idle down

HYDRAULICS

- Excavator style "negacon" pump control system
- Variable displacement pumps
- High performance, multi-functioning main control valve
- Mechanical cold oil bypass
- Bar saw slasher ready
- In-line return
- Electric hydraulic oil fill pump

OPERATOR ENVIRONMENT

- Enclosed cab with swing out front window guard meeting SAE J2267
- Dual pilot joystick control with foot pedal swing
- Reverse slope tinted windshield and skylight with sunshade
- Two cup holders
- High capacity HVAC system
- Air suspension high back seat
- AM/FM/Bluetooth Radio
- 24V to 12V converter and 2 x 12V power port
- Windshield wiper
- All down stabilizer controls
- Integrated trailer hydraulic landing gear control
- Weiler machine software
- Adjustable operator controls

ELECTRICAL

- 100 ampere alternator
- 24-volt electrical system with 2 12-volt batteries
- Main disconnect switch with Diesel Exhaust Fluid (DEF) purge indicator light
- 6 LED working lights & 1 engine compartment service light
- 4 circuit electric swivel

SALES AND SERVICE

Sold and serviced exclusively through Weiler Forestry dealers worldwide

WEILERFORESTRY.COM

OTHER STANDARD EQUIPMENT

- Extreme-duty delimiting boom and stick
- Heavy-duty, extended length center mount sub-frame
- Flat top sub-frame deck with bolt-on skid resistant fenders
- Bolt-on sub-frame ladder
- 12" (305 mm) grapple knuckle
- S-O-S sampling ports
- Ecology drains (engine oil, DEF, hyd tank)

OPTIONAL EQUIPMENT

- 32' 6" Boom & Stick (9.9 m)
- 32' 6" Grapple Saw Ready Boom & Stick (9.9 m)
- Single "V" or Double "V" heels
- 50' Crawler Trailer w/ Hydraulic Landing Gear and 426 Delimber
- Hydraulics & Controls for 3rd Party Delimber and Trailer
- 4548 Straight Narrow Jaw Grapple (2 Port or 3 Port Swivel)
- 4548 Tapered Wedge Jaw Grapple (2 Port or 3 Port Swivel)
- 5055 Straight Narrow Jaw Grapple (2 Port or 3 Port Swivel)
- 5055 Tapered Wedge Jaw Grapple (2 Port or 3 Port Swivel)
- Premium Heated & Cooled Seat
- CB Radio
- Weld-on Trailer Plating
- Weld-on Trailer Plating w/ Saw Buck Stop
- Product Link (PL243 Cellular or PL631 Satellite)
- Additional Ladders
- Vacuum Pump
- Slasher Hydraulics Adapters (JIC to o-ring face seal)
- Slasher Hydraulics Adapters w/ Shut Off Valves (JIC to o-ring face seal)
- Fire Extinguisher
- 35" Grapple Saw

WARRANTY

12 months standard, extended warranty available