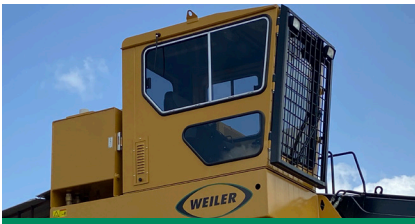


K161

STATIONARY KNUCKLEBOOM LOADER



LEVER CONTROLS.

The optional right side mounted cab features a large, fully adjustable suspension seat with lumbar support, fold-up armrests with the choice of front mounted or joystick lever controls, and a rocker swing pedal for ease of operation.



ON BOARD POWER UNIT.

The on board electric power supply and hydraulics allow for continuous or non-continuous rotation. This configuration also provides a space saving installation as all components are mounted on the loader with only the electrical harnesses routed up the mounting structure.



REMOTE POWER UNIT.

Remote electric power supply and hydraulics are placed on the ground for easier service access to the electric motor, hydraulic pumps and hydraulic valve. Hydraulic hoses are routed up the mounting structure through the center of the loader. Available in limited rotation only.



REMOTE CONTROL OPERATION.

Loaders with optional remote controls are designed with electric over hydraulic (EHC) joysticks with proportional controllers that enable the loader to be operated from a remote location. Specially designed multi-conductor cables ensure reliable signal continuity.



RESILIENT PAD MOUNTING.

The Resilient Pad Mounting System includes a set of special rubber isolators on each mounting fastener that absorbs stress in two directions. An additional hydraulic accumulator is built into the main boom cylinder circuit to further absorb peak-load shocks.



BOOM LENGTH OPTIONS.

Heavy-duty boom options range from 25' (7.6 m) to 29' (8.8 m) for handling short wood as well as fixed heel options for handling tree length stems. A solid waste boom option with a power wrist grapple is designed specifically for handling multiple types of trash and waste.

K161 SPECIFICATIONS

Gross Power	60 hp	45 kW
Electric Motor Options	380 Volt / 50 Hz	
	460 Volt / 60 Hz	
Weight*	10,610 lb	4813 kg

*Weight includes on board electric power, operator's cab, 25' boom, V heel, and 4042SN R25 grapple

System Pressure	2500 psi	172 bar
Swing Pressure	2700 psi	186 bar
Swing Speed	7 rpm	
Swing Bearing Diameter (O.D.)	38"	965 mm
Hydraulic Reservoir	77 gal	290 L

CONFIGURATIONS

1. On Board Electric Power w/
Operator's Cab on loader with lever controls
2. On Board Electric Power w/
Operator's Cab on loader with mechanical joystick lever controls
3. On Board Electric Power w/
Operator's Cab on loader with lever controls and power wrist hydraulics
4. Remote Electric Power w/
Operator's Cab on loader with lever controls and power wrist hydraulics
5. Remote Electric Power w/
Remote Operator's Station with electric over hydraulic controls

NOTE: It is the customer's responsibility to provide the remote operator's station for configuration 5.

MOTOR POWER SUPPLY

60 hp (45 kW) @ 1800 rpm electric motor
380 Volt / 50 Hz Electric Power Supply option
460 Volt / 60 Hz Electric Power Supply option
Four ring high voltage / auxiliary low voltage collector ring
NEMA 12 enclosure service panel
Direct pump drive through flex coupling
Magnetic starting system

HYDRAULICS

Three in-line gear pumps
34-33-17 gpm (129-125-64 L/min) of flow
Radial piston swing motor
77 gal (290 L) hydraulic reservoir

MOUNTING KITS

Steel Platform (includes mounting bolts, lock nuts, washers, shock pads)
Concrete Pad (includes J-hook bolts, lock nuts, washers, shock pads)
NOTE: Steel platform and/or concrete pad design are the responsibility of the customer.

BOOM OPTIONS

25' (7.6 m) Standard Boom and Stick
25' (7.6 m) Solid Waste Boom and Stick
27' (8.2 m) Standard Boom and Stick
29' (8.8 m) Standard Boom and Stick

OPERATOR CAB - OPTIONAL

Right side mounted enclosed cab
Pressurized with heat and air conditioning
Adjustable seat with arm rests
Mechanical lever controls with foot pedal swing
Reverse slope tinted windshield
Windshield wiper
AM/FM radio
Lexan skylight
Sunshade

OPTIONAL EQUIPMENT

22 Solid Waste Grapple (non continuous)
22 Solid Waste Grapple with Power Wrist (non continuous)
42 Solid Waste Grapple (non continuous)
4042 Straight Narrow Jaw Grapple, R18 Rotator
4042 Straight Narrow Jaw Grapple, R25 Rotator
33 Pulpwood Grapple, R18 Rotator
Single "V" Heel
Double "V" Heel
Swing Rotation Stops
Boom Central Grease Location
Hydraulic Tank Heater

SALES AND SERVICE

Sold and serviced exclusively through Weiler Forestry dealers worldwide

WEILERFORESTRY.COM

WARRANTY

12 months standard

Materials and specifications are subject to change without notice.
Featured machines and photos may include optional equipment. All rights reserved.

K161, SS (08-2021)