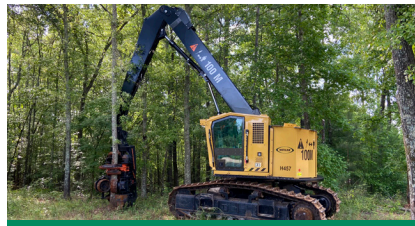


H457 TRACK HARVESTER



ENHANCED MACHINE EFFICIENCY.

Excellent multi-function capability through dedicated hydraulic pumps and optimized circuit configurations. Innovative ease-of-use features, such as the ability to reduce the frequency of foot pedal motions, improves operator efficiency.



POWERFUL PERFORMANCE.

Enhanced stability and travel speeds, along with a powerful combination of lift capacity, swing torque, and tractive effort provides for maximum performance, which allows machine to excel in harvesting and processing applications.



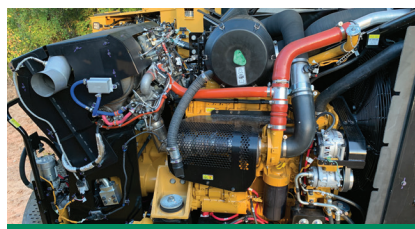
UNOBSTRUCTED GROUND CLEARANCE.

Elevated, unobstructed carbody with 33" (832 mm) of ground clearance enables unimpeded travel over rocks, stumps, and other debris. Angle between carbody and roller frames allows maximum clearance across the width of the carbody.



MAXIMUM OPERATOR COMFORT.

New cab maximizes operator experience through increased space, improved visibility, optimized operator controls, reverse opening door for easier access to the harvester head, and options that include a heated and cooled seat, deluxe lights, and cameras.



PROVEN RELIABILITY AND DURABILITY.

Forestry-duty cooling package and extensive validation of key common components that includes the engine, swing system, and grease-lubricated Cat® 336 HD HEX undercarriage ensure machine uptime and reduce operating costs.



EXCELLENT SERVICEABILITY.

Counterweight walkway enables machine level access to gull-wing engine enclosure that provides unmatched serviceability of components. Enclosure provides a flat area to complete preventative maintenance and service.

H457 SPECIFICATIONS

Engine Model	Cat® C9.3 Tier 4 Final	Tractive Effort	68,848 lbf 31 229 kgf	Fuel Tank Capacity	216 gal 819 L
Gross Power	298 hp 222 kW	Undercarriage Size	336 HD HEX	Engine Oil Capacity	10.6 gal 40 L
Engine Displacement	568 in³ 9.3 L	Undercarriage Pitch	8.5" 216 mm	Hydraulic System Capacity	79.8 gal 302 L
Weight (no head)	67,140 lb 30 454 kg	Ground Clearance	33" 832 mm	Transport Width	10' 11" 3.32 m
Maximum Flow	287 gpm 1085 L/min	Track Gauge	102" 2580 mm	Height	11' 3" 3.42 m
Max. Reach (no head)	32' 6" 9.91 m	Track Length	192" 4868 mm	Length (boom ext., no head)	39' 11" 12.16 m
Lift at Max. Reach (no head)	11,091 lb 5031 kg			Length (boom tuck., no head)	26' 9" 8.16 m

Base configuration includes standard harvester boom and stick and 24" (600 mm) single grouser shoes.

POWERTRAIN

Cat C9.3 engine certified to EPA Tier 4 Final
 Primary, secondary, and tertiary fuel filters, including water separator
 Side-by-side radiator and oil cooler
 Swing out air-to-air cooler and air conditioner condenser
 Removable debris screen
 Centrifugal engine air pre-cleaner
 Under-hood 2-stage engine air cleaner
 Variable pitch, reversing fan with guard
 Heavy-duty starter and ether aid

UNDERCARRIAGE

Heavy-duty track roller frames
 Grease-lubricated 336 HD HEX track
 Straddle mounted carrier rollers
 Heavy-duty bottom track rollers
 Heavy-duty recoil mechanisms
 Full length track shoe support
 Heavy-duty travel motor and swivel guards
 Towing eyes on base frame

HYDRAULICS

One hydraulic pump group for implement functions
 One hydraulic pump group for track
 Dedicated attachment pump for harvester head functions
 High-performance hydraulic return filters
 325 size, high torque swing drive
 Swing cushion valve and automatic swing parking brake
 Electric hydraulic oil fill pump
 Spare hose storage area

ELECTRICAL

115 ampere alternator
 24-volt electrical system with 2 12-volt batteries
 Wiring for harvester head controls
 9 LED working lights and 2 LED service lights
 Horn and travel alarm
 Secondary engine shut off switch
 Product Link™ ready

SALES AND SERVICE

Sold and serviced exclusively through Weiler Forestry dealers worldwide

WEILERFORESTRY.COM

OPERATOR ENVIRONMENT

Enclosed FOPS/ROPS/OPS/OR-OSHA/WCB certified cab
 Air suspension with integrated joysticks and head rest
 Left-hand tilt console
 Retractable 4-point seat belt
 Touchscreen display monitor and programmable operator controls
 Harvester joystick controls
 Reverse opening side door
 Scratch resistant polycarbonate windows
 Reverse slope 1.25" (32 mm) front windshield
 Front window emergency escape
 Skylight
 Left-side fresh air window
 Pressurized cab with filtered ventilation
 Heater / air conditioner / defroster
 Radio ready with speakers
 Mount locations for CB radio and other accessories
 Behind seat storage tray
 Three cup holders, two USB sockets, and literature holder

OTHER STANDARD EQUIPMENT

Heavy-duty hood enclosure
 Heavy-duty counterweight with machine level engine enclosure access
 Heavy-duty doors, covers, and bottom guards

OPTIONAL EQUIPMENT

30 or 50 mm counterweight
 Standard or star carrier rollers
 24" (600 mm) SG 336 HD HEX Track
 28" (710 mm) SG or DG 336 HD HEX Track
 36" (900 mm) TG 336 HD HEX Tri-Track
 Std. or deluxe cab (heated-cooled seat / satellite radio / sun screens)
 Standard or deluxe lights (14 LED working lights)
 Standard, cold, or arctic starting aid
 Vacuum pump

WARRANTY

12 months standard, extended warranty available

Materials and specifications are subject to change without notice.
 Featured machines and photos may include optional equipment. All rights reserved.

H457 T4, SS (12-2020)