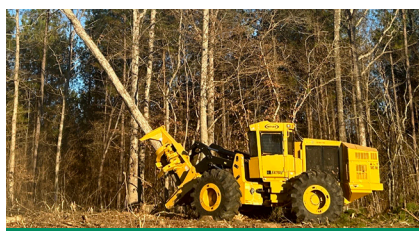


# B670A WHEEL FELLER BUNCHER



## **SOLID STABILITY & EXCELLENT RIDE.**

The transverse mounted engine, low center of gravity, and wider axles provide rock solid stability. The cab sits between the axles instead of close to the front frame, delivering a topnotch ride for the operator. Improved foot pedal angles and 2 inches more leg room enhances operator comfort.



## **IMPROVED TRAVEL.**

Higher ratio axles reduce the torque in the drive train by almost 40%. The improved axle ratio also creates 5% more drawbar power and 10% more ground speed in turtle mode. Fully adjustable speed settings let the operator set working ranges and bump through the ranges during operation.



## **SYSTEM SIMPLIFICATION.**

Simplified electrical and hydraulic systems, fewer electrical pin connections and sensors, and an overall reduction in hoses and fittings maximize reliability. Improved front frame reduces damage to lift cylinder hoses, provides access to hoses through a removable guard, and reduces debris entry.



## **CAB DURABILITY.**

The cab features integrated LED lights, removing the light boxes from the previous series. 1.7x thicker skylight with cross bars removed provides an unobstructed view to tree tops. The new roof angle deflects debris more efficiently and has an overall thicker cab roof for durability.



## **SAW CIRCUIT RELIABILITY.**

An optimized saw circuit, that includes a dedicated saw valve results in more power and efficiency. Case drain filtration adds an additional level of protection and confidence to the system. Priority settings allow the control system to deliver saw recovery or propel to match the application.



## **EXCELLENT SERVICEABILITY.**

Pressurized engine compartment keeps debris out of the machine reducing cleaning. The sloped hood sheds debris to prevent build up. Ground level fuel fill, electric hydraulic oil fill pump, and excellent engine access deliver superior serviceability making it quick and easy to do daily maintenance.



# B670A SPECIFICATIONS

<b>ENGINE MODEL</b>	Cat® C7.1 Stage 5	<b>WHEELBASE</b>	115" 2921mm	<b>GROUND CLEARANCE</b>	19.4" 493 mm
<b>GROSS POWER</b>	265 hp 198 kW	<b>FUEL CAPACITY</b>	81.6 gal 309 L	<b>TRANSPORT WIDTH</b>	9' 1" 3.03 m
<b>ENGINE SPEED</b>	1880 rpm	<b>DEF CAPACITY</b>	5.0 gal 19 L	<b>TRANSPORT HEIGHT</b>	10' 11" 3.33 m
<b>WEIGHT</b>	38,450 lb 17 440kg	<b>HYDRAULIC SYSTEM</b>	71.1 gal 269 L	<b>TRANSPORT LENGTH</b>	25' 4" 7.73 m

## FELLING SAWS SPECIFICATIONS

	<b>BH230 BUNCHING SAW</b>		<b>CP230 CENTER POST</b>		<b>GP230 GENERAL PURPOSE</b>		<b>SG230 SIDE CUT</b>	
<b>ACCUMULATION AREA</b>	8.6 ft <sup>2</sup>	0.80 m <sup>2</sup>	5.1 ft <sup>2</sup>	0.47 m <sup>2</sup>	5.8 ft <sup>2</sup>	0.54 m <sup>2</sup>	4.0 ft <sup>2</sup>	0.37 m <sup>2</sup>
<b>MAX SINGLE CUT</b>	23.0"	584 mm	23.0"	584 mm	23.0"	584 mm	23.0"	584 mm
<b>WEIGHT</b>	6,275 lb	2846 kg	7,100 lb	3220 kg	6,150 lb	2790 kg	6,650 lb	3016 kg

Base configuration includes 30.5-32 26PR Tires, BH230 bunching saw, and full tank of fuel. Weight deduct 1,720 lb (780 kg) for 28L-26 tires, add 840 lb (381 kg) for 30.5L-32 2X Ring tires, and 0 lb (0 kg) for 67-34 tires. Height and ground clearance deduct 4.0" (10.2 cm) for 28L-26 tires, 2.9" (7.4 cm) for 67-34 tires.

## POWERTRAIN

- Cat® C7.1 engine certified to EPA Stage 5
- Primary and secondary fuel filters, including water separator
- Electric fuel priming and transfer pump
- Centrifugal engine air pre-cleaner
- 2-Stage engine air cleaner
- Cross-flow cooling system w/side by side cores including a/c and fuel cooler
- Hydraulic on demand reversing cooling fan
- Electronic reversing pressurizing fan
- 2-Speed, hydraulically shifted transmission
- New higher ratio axles
- Momentary front differential lock
- On/off rear differential lock
- Heavy-duty driveshafts
- Lubed for life universal joints except center joint
- Spring applied, hydraulically released parking brake

## OPERATOR ENVIRONMENT

- Enclosed OPS/FOPS/ROPS certified tilt cab with increased roof thickness
- Unobstructed skylight
- Reverse slope 3-piece windshield
- High capacity HVAC system
- Pressurized water tank in rear of machine
- Air suspension seat with harness seat belt
- Joystick steering controls
- Adjustable operator controls
- Weiler machine software
- Terrain selection mode
- Road steer mode
- 6 speed selections
- Joystick gather arm(s) controls
- AM/FM/Bluetooth radio
- 24V to 12V converter, 1 x 12V power port, and 1 x USB port
- 2 beverage holders

## SALES AND SERVICE

Sold and serviced exclusively through Weiler Forestry dealers worldwide.

## HYDRAULICS

- Weiler software monitors performance and delivers power where needed
- Variable displacement pumps with load-sense hydraulics
- Oversized in-tank filter
- Dedicated saw circuit with case drain filter
- Electric hydraulic oil fill pump

## ELECTRICAL

- 24-volt electrical system with 2 x 12-volt batteries
- Main disconnect switch with Diesel Exhaust Fluid (DEF) purge indicator light
- 2 x front and 2 x rear LED working lights integrated into the cab
- Product Link™ Ready

## OTHER STANDARD EQUIPMENT

- Double walled box section frames to support bending and twisting forces
- Field proven dual tapered roller bearing upper and lower center hitch
- Pressurized engine, hydraulic, and Clean Emission Module compartments
- Ground level fuel fill with right hand DEF fill
- Single side engine service

## OPTIONAL EQUIPMENT

- Cab Sweeps
- Slider Windows & Door Screens
- Skylight Sunshade
- CB Radio
- Phone Holder
- Product Link™ (PL243 Cellular or PL631 Satellite)
- Rear-view Camera w/ 10" Monitor & 2 x Rear & 2 x Front LED Lights
- Fire Extinguisher
- Water Tank Fill w/ RV Antifreeze Mixture (good to -12 deg F)
- Saw Speed Sensor
- Carbide or Steel Cutting Teeth
- 28L-26 Tires - Overall Width 117" (2.97 m)
- 30.5L-32 Tires - Overall Width 119" (3.03 m)
- 30.5L-32 2XRing Tires or 2XRing Front Only - Overall Width 119" (3.03 m)
- 67-34 Tires - Overall Width 129" (3.27 m)
- 73x44-32 - Overall Width 147" (3.74 m)

## WARRANTY

12 months standard. Extended warranty available.

